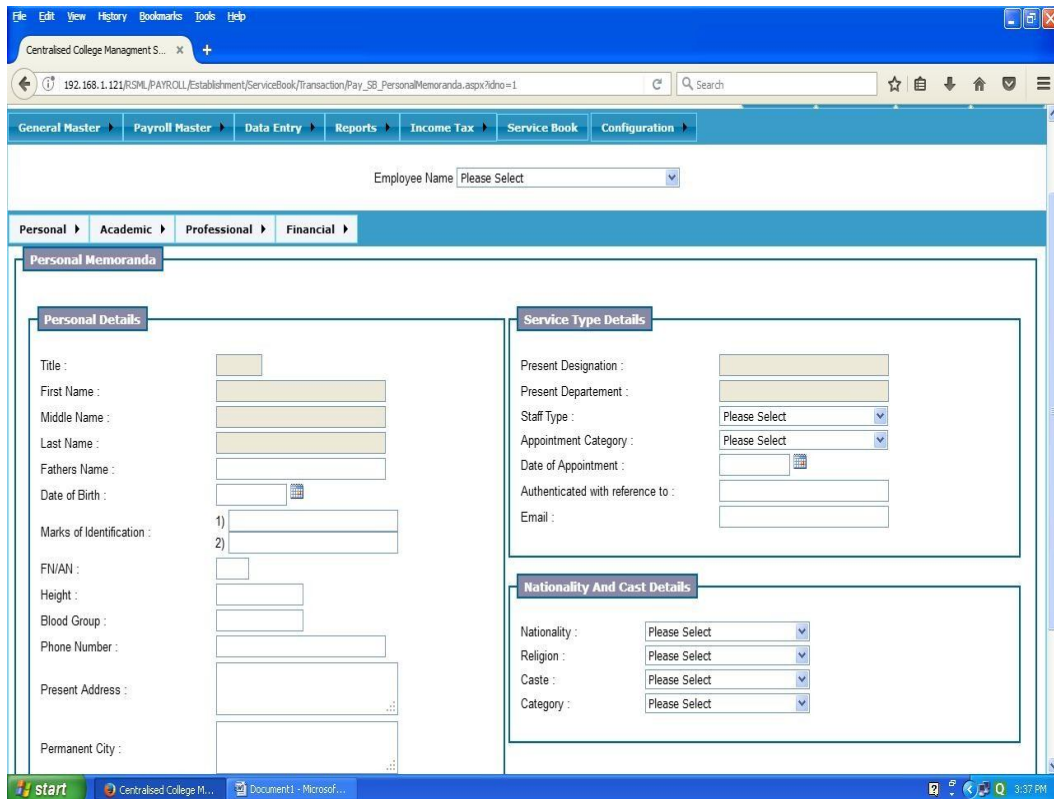
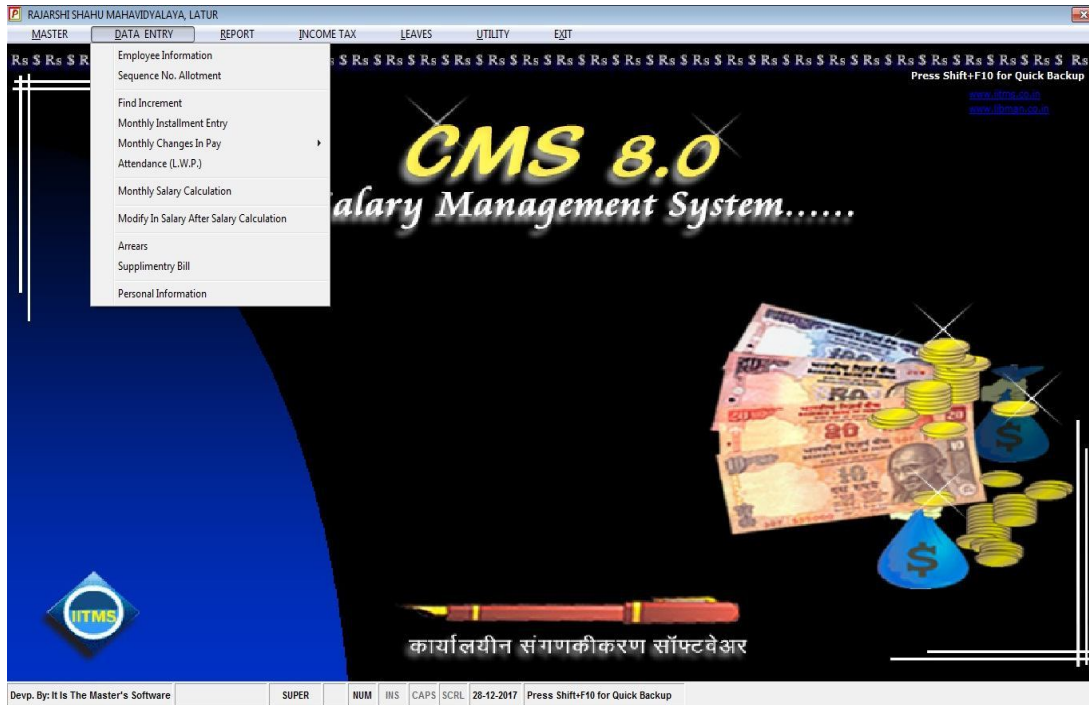


1. Finance and Accounts Module Screenshot



Tally ERP 9

P: Print E: Export M: E-Mail O: Upload S: Shop G: Language K: Keyboard K: Control Centre H: Support Centre H: Help F1: Select Cmp

Gateway of Tally Ctrl + M F1: Shut Cmp

Current Period: 1-4-2017 to 31-3-2018 Current Date: Saturday, 1 Apr, 2017

List of Selected Companies

Name of Company	Date of Last Entry
Rsmi Group 2017-2018	
Rsmi Group 2017-2018	
RSML-Alumini Ass	26-Oct-2017
RSML-Biotechnology - (from 1-Apr-2017)	(c) 23-Dec-2017
RSML-HSC Vocational - (from 1-Apr-2017)	18-Dec-2017
RSML-Information Technology - (from 1-Apr-2017)	23-Dec-2017
RSML-Junior College (Granted) - (from 1-Apr-2017)	(c) 20-Dec-2017
RSML-Junior College (Non-Granted)	(c) 25-Dec-2017
RSML.P.G. (General) - (from 1-Apr-2017)	23-Dec-2017
RSML-Pre Professional Education	(c) 16-Nov-2017
RSML-Senior College (Granted) - (from 1-Apr-2017)	21-Dec-2017
RSML-Senior College (Non-Grant) - (from 1-Apr-2017)	25-Dec-2017
Sans-Building Const - (from 1-Apr-2017)	(c) 7-Dec-2017
Sans-Development Section - (from 1-Apr-2017)	(c) 25-Dec-2017
Sans. Hostel	(c) 25-Dec-2017
Sans. Shahu Canteen	(c) 1-Apr-2017

* (c) Connected to Tally.NET

Gateway of Tally

Masters

- Accounts Info
- Inventory Info
- QuicK Setup

Transactions

- Accounting Vouchers
- Inventory Vouchers

Utilities

- ImpOrt of Data
- Banking

Reports

- Balance Sheet
- InCome & Expense A/c
- Stock Summary
- Display
- College Reports
- Multi Account Printing
- Quit

Product	Version	License	Configuration	Calculator
Tally POWER OF SIMPLICITY Tally.ERP 9	Series A Release 4.8 Install Ref. 4.93 (39/39) Tally Messages	Serial Number: 795485862 Site ID: Accounts Account ID: principal@shahucollegegurur.org.in	Stat: 219 1 TD(L)s loaded Proxy: ODBC Server on Port: 9000	Install: STAT 269 51 18:16:08 : Sans.Hostel - Company connected successfully 52 18:16:09 : Sans. Shahu Canteen - Company connected successfully 53 >

Tally MAIN -> Gateway of Tally (c) Tally Solutions Pvt. Ltd., 1988-2014 Mon, 25 Dec, 2017 18:18:34

start Tally ERP 9 6:18 PM